

630vacationercase

medium duty

> TECHNICAL SPECIFICATIONS

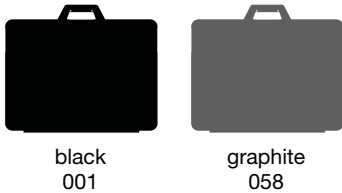
material :	polypropylene
unit weight (no foam) :	10.34 lbs (4.7 kg)
qty per pack :	1
pack weight (no foam) :	12.25 lbs (5.57 kg)
airline carry-on :	no
watertight :	no
warranty :	manufacturing defects
wheels :	no

> CASE DIMENSIONS

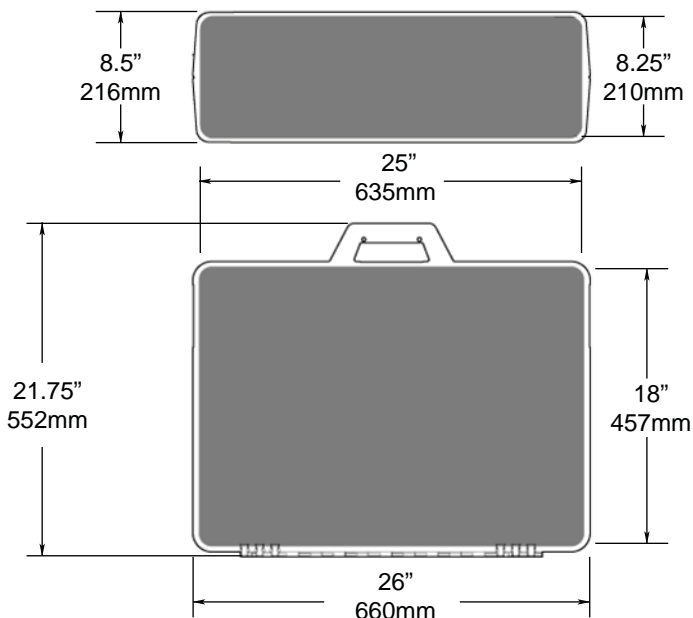
interior :	25" x 18" x 8.25" (635 x 457 x 210 mm)
exterior :	26" x 21.75" x 8.5" (660 x 552 x 216 mm)



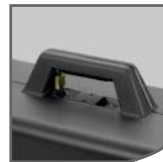
>> COLORS



>> CASE DIMENSIONS



>> STANDARD FEATURES



> integrated padlockable handle

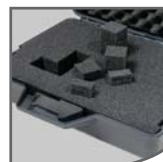


> nylon latches



> strong metal core hinges

>> AVAILABLE OPTIONS



> pick and pluck foam



> custom die cut foam



> silk screen printing



> bungee cord restraints



> padlock